

Billiani Finishings / Finiture



Billiani Finiture / Finishings

Le finiture sono una componente imprescindibile del nostro design. Se il legno è quello di frassino, faggio, rovere e noce, colori e tessuti esprimono lo spirito del momento.

/ Our finishes are an essential component of Billiani design. Whether the wood be ash, beech, oak or walnut, it's the colours and fabrics that express the spirit of the moment.

Legno / Wood

FAGGIO / BEECHWOOD



Sbiancato
FG 0078



Naturale
FG 0003



Noce
FG 0012



Wengé
FG 0025

FRASSINO / ASHWOOD



Sbiancato
FR 0065



Naturale
FR 0076



Tabacco
FR 0035



Wengé
FR 0047

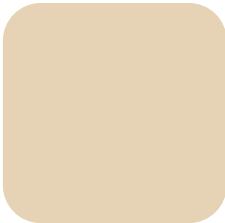
Tinta o laccatura del legno / Wood staining or lacquering



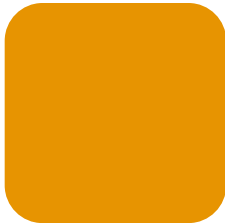
Le essenze legno sono disponibili in versione tinta o laccata, nei seguenti colori.
/ Wood is available lacquered or stained in the following colours.

Laccato
/ Lacquered

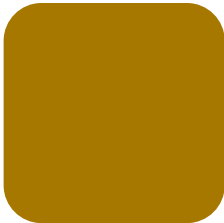
Tinto
/ Stained



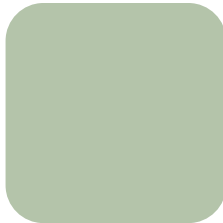
Avorio chiaro
RAL 1015



Giallo polenta
RAL 1006



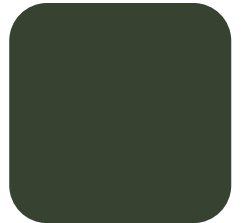
Giallo curry
RAL 1027



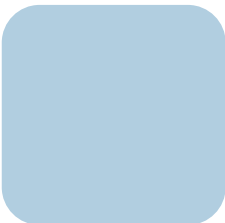
Salvia
NCS S 2010-G10Y



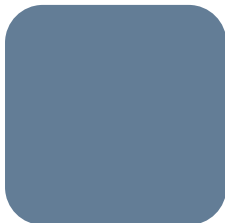
Verde reseda
RAL 6011



Verde cromo
RAL 6020



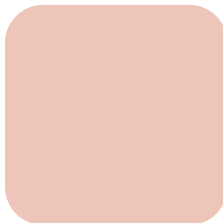
Azzurro pepe
NCS S 1020-R90B



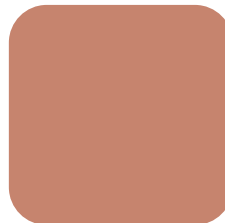
Blu colomba
RAL 5014



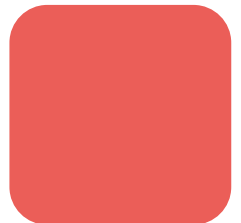
Blu Billiani
NCS S 7020-R80B



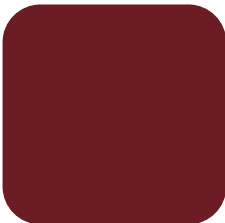
Rosa pallido
NCS S 1015-Y80R



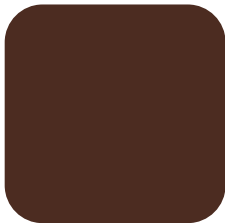
Rosso beige
RAL 3012



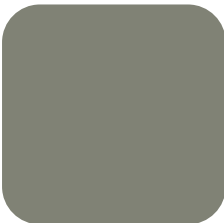
Corallo
NCS S 1070-Y80R



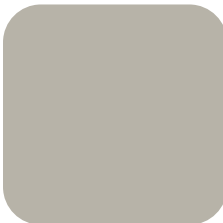
Rosso porpora
RAL 3004



Marrone mogano
RAL 8016



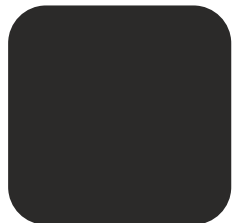
Grigio cemento
RAL 7033



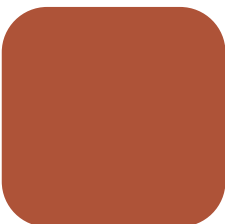
Grigio seta
RAL 7044



Grigio antracite
RAL 7016



Nero traffico
RAL 9017



Arancione terra
NCS S 3060 Y70R



Pavone
NCS S 6020 B50 G

Tessuti / Fabrics

INDIANSKOP (Cat. Select)



2900



2901



2902



2903



2904



2905



2906



2907

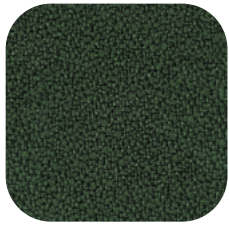
BORICO (Cat. Select)



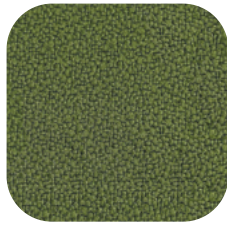
2891



2890



2889



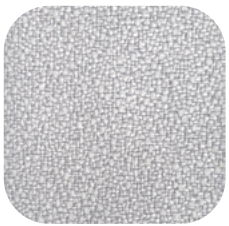
2888



2887



2886



2885



2884

Tessuti / Fabrics

VOLTA CELESTE (Cat. Select)



2876



2877



2878



2879



2880



2881



2882



2883

FENICE (Cat. Select)



851



2852



2853



2854



2855



2856



2857



2858

Tessuti / Fabrics

FLAMENCO (Cat. Select)



0897



1483



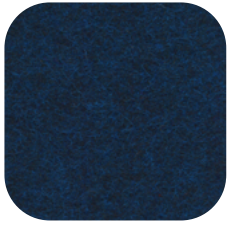
0871



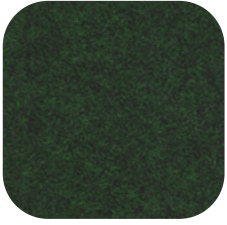
2380



1052



2074



1492



0929

TIME (Cat. Essential)



2868



2869



2870



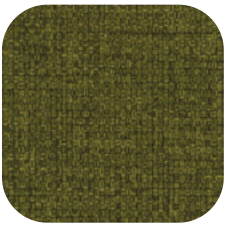
2871



2872



2873



2874



2875

Tessuti / Fabrics

LASER N (Cat. Essential)



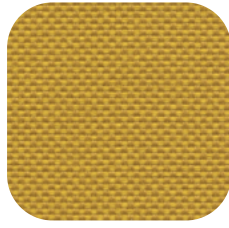
2382



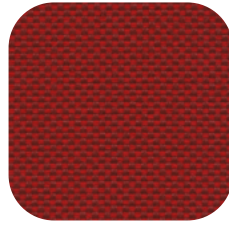
2860



2384



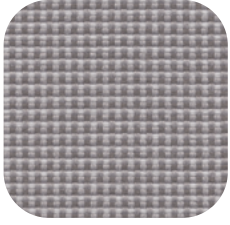
2344



2385



2356

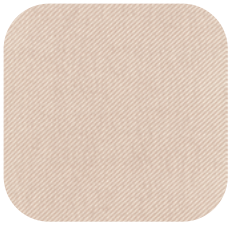


2861



2387

TWILLTWENTY (Cat. Tailored)



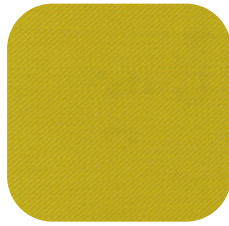
2275



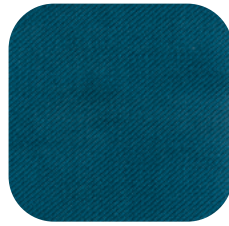
2390



2389



2859



2392



2274



2391



2393

Tessuti / Fabrics

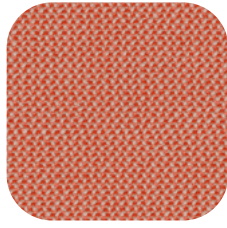
CREDO (Cat. Tailored)



2394



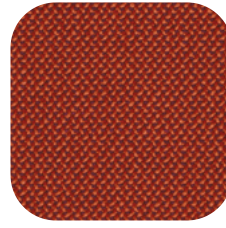
2284



2285



2282



2281



2283



2395



2396

BOEMIAN (Cat. Select)



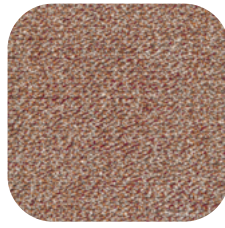
2400



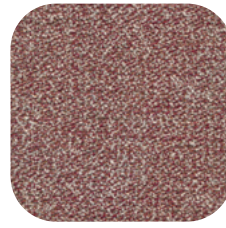
2401



2402



2403



2404



2405



2406



2407

Tessuti / Fabrics

BRIONNE (Cat. Tailored)



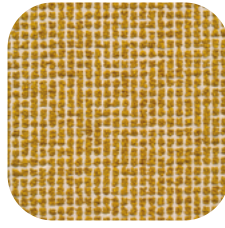
2408



2862



2863



2864



2865



2866



2410



2867

TRESIGALLO (Cat. Select)



2892



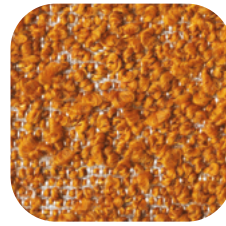
2893



2894



2895



2896



2897



2898



2899

Caratteristiche tessuti/Fabric features

INDIANSKOP (Cat.Select)

Composizione/Composition	34% VI ; 31% CO; 15% LI; 13% PC; 7% PL-RECYCLED COTTON
Martindale (resistenza all'abrasione/abrasion resistance)	Dichiarato/Declared 25.000 cicli/rubs
Solidità allo sfregamento/Fastness to rubbing	Dichiarato/Declared 4/5
Pilling	Dichiarato/Declared 3/4
Reazione al fuoco/Flame resistance	BS 5852/0; Cal TB 117:2013 sect. 1;

BORICO (Cat. Select)

Composizione/Composition	100% RECYCLED PL TCS
Martindale (resistenza all'abrasione/abrasion resistance)	Dichiarato/Declared 100.000 cicli/rubs
Solidità allo sfregamento/Fastness to rubbing	Dichiarato/Declared 4/5
Pilling	Dichiarato/Declared 4/5
Reazione al fuoco/Flame resistance	BS 5852/0; Cal TB 117: 2013 sect.1; EN 1021:1&2

VOLTA CELESTE (Cat.Tailored)

Composizione/Composition	100% RECYCLED-BIODEGRADABLE PL
Martindale (resistenza all'abrasione/abrasion resistance)	Dichiarato/Declared 100.000 cicli /rubs
Solidità allo sfregamento/Fastness to rubbing	Dichiarato/Declared 4/5
Pilling	Dichiarato/Declared 4
Reazione al fuoco/Flame resistance	Cal TB 117:2013

FENICE (Cat.Select)

Composizione/Composition	100% PL
Martindale (resistenza all'abrasione/abrasion resistance)	Dichiarato/Declared 100.000 cicli/rubs
Solidità allo sfregamento/Fastness to rubbing	Dichiarato/Declared 4/5
Pilling	Dichiarato/Declared 5
Reazione al fuoco/Flame resistance	1IM - UNI 9175; UNI 9177 class 1; EN 1021:1&2; BS 7176 + A1 medium hazard; BS 5852/CRIB 5; Cal TB 117:2013; IMO MED 3.20 - Ftp 307 part 8; IMO MED 3.19 - Ftp 307 part 7

FLAMENCO (Cat. Select)

Composizione/Composition	100% WO
Martindale (resistenza all'abrasione/abrasion resistance)	Dichiarato/Declared 60.000 cicli/rubs
Solidità allo sfregamento/Fastness to rubbing	Dichiarato/Declared 4/5
Pilling	Dichiarato/Declared 4
Reazione al fuoco/Flame resistance	1 IM-UNI 9175; EN 1021:1&2; BS 5852/CRIB 5; BS 7176 medium hazard; Can meet: Cal TB 117:2013

TIME (Cat.Essential)

Composizione/Composition	100% RECYCLED PL
Martindale (resistenza all'abrasione/abrasion resistance)	Dichiarato/Declared 100.000 cicli/rubs
Solidità allo sfregamento/Fastness to rubbing	Dichiarato/Declared 4/5
Pilling	Dichiarato/Declared 5
Reazione al fuoco/Flame resistance	1 IM-UNI 9175; EN 1021-1&2; BS 5852/CRIB 5; BS 7176 medium hazard; Cal TB 117:2013

Norme di riferimento/Norms

Martindale (resistenza all'abrasione/Abrasion resistance)	Norma/Norm UNI EN ISO 12947-2
Solidità allo sfregamento/Fastness to rubbing	Norma/Norm ISO 105-X12
Pilling	Norma/Norm ISO 12945-2

Caratteristiche tessuti/Fabric features

LASER N (Cat. Essential)

Composizione/Composition	100% PL TREVIRA CS
Martindale (resistenza all'abrasione/abrasion resistance)	Dichiarato/Declared 100.000 cicli/rubs
Solidità allo sfregamento/Fastness to rubbing	Dichiarato/Declared 4/5
Pilling	Dichiarato/Declared 5
Reazione al fuoco/Flame resistance	AM 18 - NF D 60013; B1-DIN 4102; BS 7176 medium hazard; C1 (UNI 9174 - UNI 8456); Cal TB 117:2013; BS 5852/CRIB 5; EN 1021:1&2; IMO 307 (88) part 8 M1 (NF P 92501-7); Can meet: IIM-UNI 9175; EN 13773; ÖNORM B 3825-ÖNORM A 3800-1 class B1-Q1-TR1; USA NFPA 260; USA NFPA 710

TWILLTWENTY (Cat.Tailored)

Composizione/Composition	100% PL - FLAME RETARDANT
Martindale (resistenza all'abrasione/abrasion resistance)	Dichiarato/Declared 80.000 cicli/rubs
Solidità allo sfregamento/Fastness to rubbing	Dichiarato/Declared 4/5
Pilling	Dichiarato/Declared 4/5
Reazione al fuoco/Flame resistance	M1 NFP902-503-504-505; B1 DIN 4102-1; IMO 307 (88) 8; CLASSE 1 TENDAGGI; BS 5852/0; BS 5867; BS 7176 medium hazard; Cal TB 117:2013

CREDO (Cat.Tailored)

Composizione/Composition	95 % WV; 5% PA
Martindale (resistenza all'abrasione/abrasion resistance)	Dichiarato/Declared 100.000 cicli/rubs
Solidità allo sfregamento/Fastness to rubbing	Dichiarato/Declared 4/4
Pilling	Dichiarato/Declared 4/5
Reazione al fuoco/Flame resistance	Cal TB 117:2013; EN 1021:1&2; BS 5852/0; IIM- UNI 9175; ÖNORM B1/Q1; IMO 2014/90/EU MED

BOEMIAN (Cat.Select)

Composizione/Composition	5% CO; 25% VI; 13% LI; 15% WO; 25% PL; 15% PC; 2% PA
Martindale (resistenza all'abrasione/abrasion resistance)	Dichiarato/Declared 40.000 cicli/rubs
Solidità allo sfregamento/Fastness to rubbing	Dichiarato/Declared 4/5
Pilling	Dichiarato/Declared 4
Reazione al fuoco/Flame resistance	BS 5852/0; BS 5852/1; Cal TB 117:2013

BRIONNE (Cat.Tailored)

Composizione/Composition	18% CO; 31% PL; 26% WO; 22% PC; 3% PA
Martindale (resistenza all'abrasione/abrasion resistance)	Dichiarato/Declared 40.000 cicli/rubs
Solidità allo sfregamento/Fastness to rubbing	Dichiarato/Declared 4/5
Pilling	Dichiarato/Declared 3/4
Reazione al fuoco/Flame resistance	BS 5852/0; Cal TB 117:2013

TRESIGALLO (Cat.Select)

Composizione/Composition	22% PC; 22% WV; 22% PL; 14% VI; 13% CO; 7% LI - RECYCLED COTTON
Martindale (resistenza all'abrasione/abrasion resistance)	Dichiarato/Declared 30.000 cicli/rubs
Solidità allo sfregamento/Fastness to rubbing	Dichiarato/Declared 4/5
Pilling	Dichiarato/Declared 4
Reazione al fuoco/Flame resistance	BS 5852/0; Cal TB 117:2013 sect.1

Norme di riferimento/Norms

Martindale (resistenza all'abrasione/abrasion resistance)	Norma/Norm UNI EN ISO 12947-2
Solidità allo sfregamento/Fastness to rubbing	Norma/Norm ISO 105-X12
Pilling	Norma/Norm ISO 12945-2

Timent

GRETO (Cat. Tailored)



2634



2631



2630



2633



2632



2629



2627



2628



2623



2624



2625



2626



2620



2622



2621

Timent

GOLENA (Cat. Tailored)



2618

2619

2617

2616



2614

2613

2615

2612

Greto

Composizione/Composition

Martindale (resistenza all'abrasione/abrasion resistance)

Solidità allo sfregamento/Rub fastness

Pilling

Reazione al fuoco/Flame resistance

Greto Unito 52%CO-20%WO-18%PC-10%PA

Greto Pattern 45%CO-23%WO-12%PA-20%PC

35.000 cycles +/- 10% UNI EN ISO 12947-2:2000

Dry 4-5 / Wet 2-3 (Black WET 2) UNI EN ISO 105-X12:1995

Grade 4/5 (change at 5.000 turns) UNI EN ISO 12945-2:2002

BS 5852:2006 CIGARETTE BS 5852:2006 MATCH CAL TB 117:2013

Golena

Composizione/Composition

Martindale (resistenza all'abrasione/abrasion resistance)

Solidità allo sfregamento/Rub fastness

Pilling

Reazione al fuoco/Flame resistance

Golena Unito 60%CO-35%CA-5%PA

Golena Pattern 50%CO-43%CA-7%PA

35.000 cycles +/- 10% UNI EN ISO 12947-2:2002

Dry 4-5 / Wet 2-3 (Black WET 2) UNI EN ISO 105-X12:1995

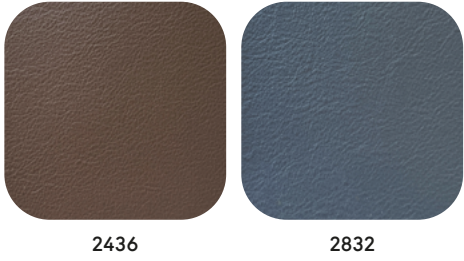
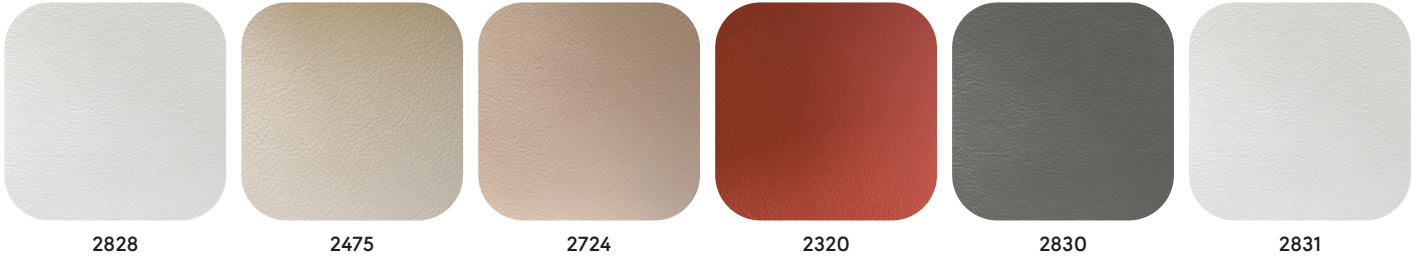
Grade 3/4 (change at 5.000 turns) UNI EN ISO 12947-2:2000

BS 5852:2006 CIGARETTE BS 5852-1 (1979) MATCH

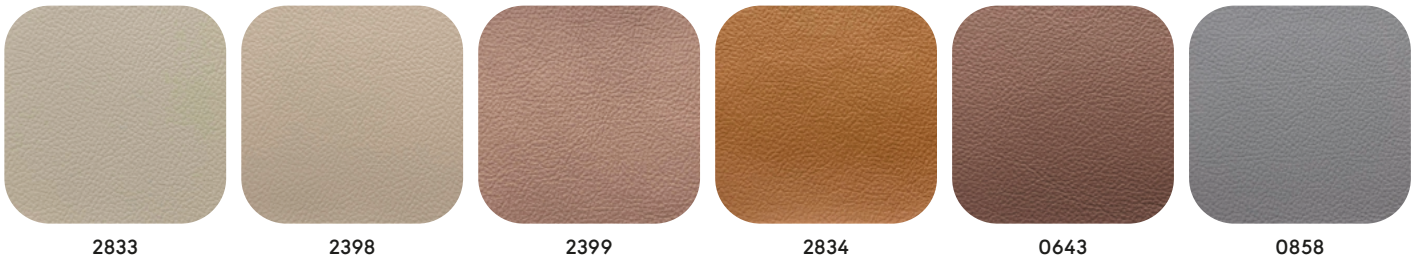
CRIB 5: Timènt is optionally available in the UNIQUE price category to include Billiani-supplied and fitted Crib 5 interliner

Pelle / Leather

NUVOLA (Cat. Couture)

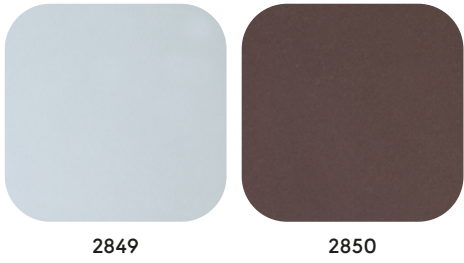
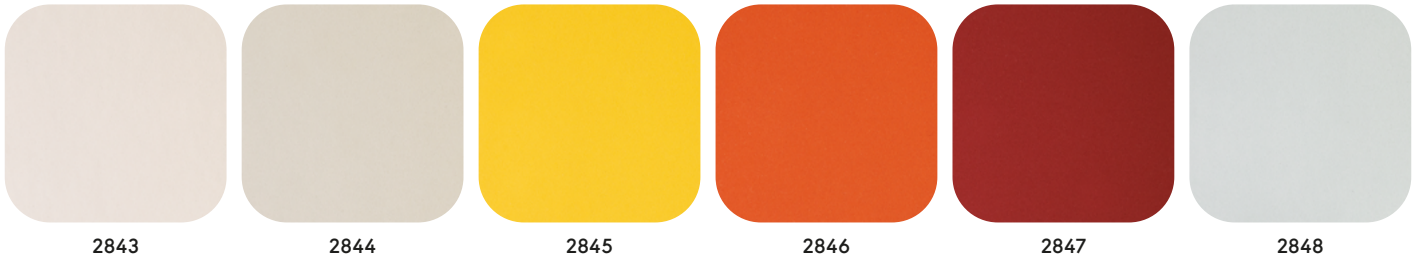


SOFT UNITO (Cat. Tailored)

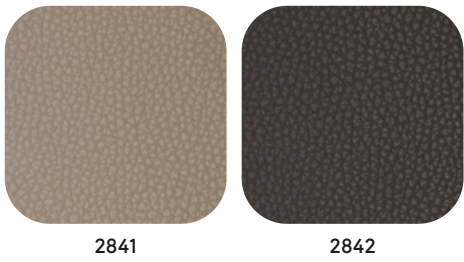
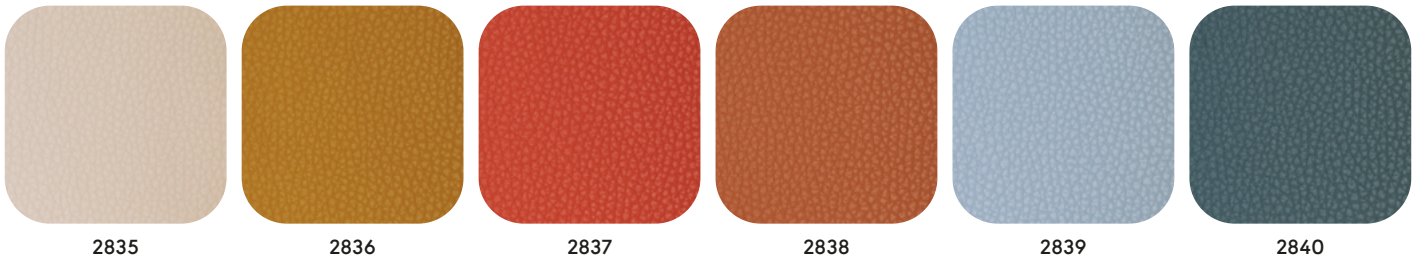


Ecopelle / Faux leather

SATEN (Cat. Select)



AIRE (Cat. Select)



Caratteristiche Pelle ed Ecopelle/Leather and Faux leather Features

NUVOLA (Cat.Couture)

Composizione/Composition	100% Pelle bovina fiore corretto liscio/Bovine leather smooth corrected grain - Spessore/Thickness 1,0-1,2
Solidità allo sfregamento/Fastness to rubbing	Norma/Norm EN ISO 11640 Dichiarato/Declared 4
Reazione al fuoco/Flame resistance	EN ISO 1021:1&2; BS 5852/0; BS 5852/1; IMO MED MSC.307; Cal TB 117:2013

SOFT UNITO (Cat. Tailored)

Composizione/Composition	100% pelle bovina/Bovine leather Spessore/Thickness 0,9-1,1 mm
Solidità allo sfregamento/Fastness to rubbing	Norma/Norm EN ISO 11640 Dichiarato/Declared 4/4
Reazione al fuoco/Flame resistance	EN 1021:1

AIRE (Cat.Select)

Composizione/Composition	20% PL; 16% CO; 64% PU
Martindale (resistenza all'abrasione/abrasion resistance)	Dichiarato/Declared 100.000 cicli /rubs
Solidità allo sfregamento/Fastness to rubbing	Norma/Norm ISO 105-X12 Dichiarato/Declared 5
Reazione al fuoco/Flame resistance	1IM - UNI 9175; EN 1021:1&2; BS 5852/0; BS 5852/1; BS 5852/CRIB 5; Cal TB 117:2013; IMO RES MSC - 307 (88) 1 part 8;

SATEN (Cat.Select)

Composizione/Composition	35% CO; 65% PU
Martindale (resistenza all'abrasione/abrasion resistance)	Dichiarato/Declared 100.000 cicli/rubs
Solidità allo sfregamento/Fastness to rubbing	Norma/Norm ISO 105-X12 Dichiarato/Declared 5
Reazione al fuoco/Flame resistance	1IM- UNI 9175; EN 1021:1&2; BS 5852/0; BS 5852/1; BS 5852/CRIB 5; IMO RES MSC - 307(88) 1 part 8

Norme di riferimento/Norms

Martindale (resistenza all'abrasione/abrasion resistance)	Norma/Norm UNI EN ISO 12947-2
Solidità allo sfregamento/Fastness to rubbing	Norma/Norm ISO 105-X12
Pilling	Norma/Norm ISO 12945-2

Piani tavoli / Table tops

MDF LAMINATO / LAMINATED MDF

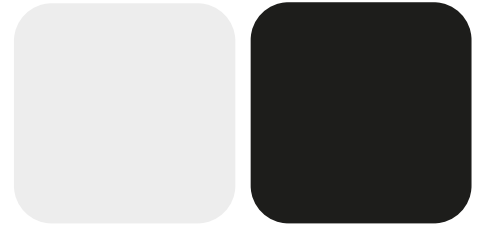


RAL 9016

RAL 9017

RAL 7044

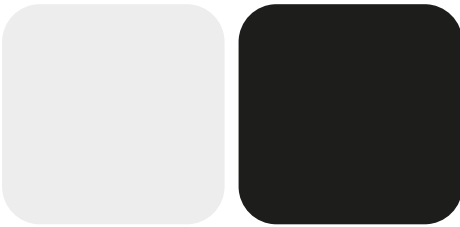
HPL



RAL 9016

RAL 9017

MDF LACCATO / LAQUERED MDF



RAL 9016

RAL 9017

(Altri colori disponibili su richiesta / Non standard colours available on request)

IMPIALLACCIATO FAGGIO / BEECH VENEER



Sbiancato
FG 0078

Naturale
FG 0003

Fango
FG 0027

Noce
FG 0012

Wengé
FG 0025

IMPIALLACCIATO FRASSINO / ASH VENEER



Sbiancato
FR 0065

Naturale
FR 0076

Fango
FR 0028

Tabacco
FR 0035

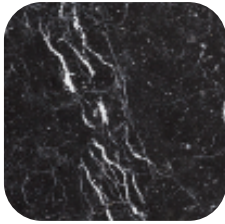
Wengé
FR 0047

Piani tavoli / Table tops

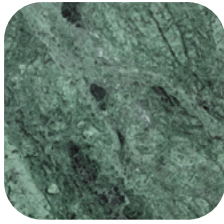
MARMO / MARBLE



Carrara



Marquina



Guatemala

TRAVERTINO / TRAVERTINO MARBLE (Disponibile solo per tavoli Corolla / Available only for Corolla tables)



Classic Travertino

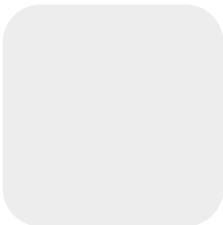


Red Travertino

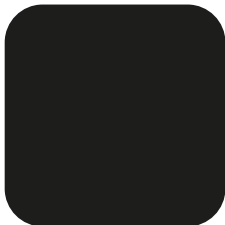


Travertino Noce

VETRO / GLASS



Extrachiaro
/Extraclear

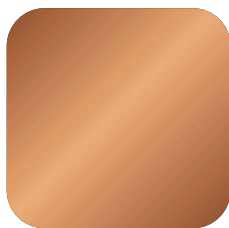


Fumè
/Smoked

Acciaio / Steel



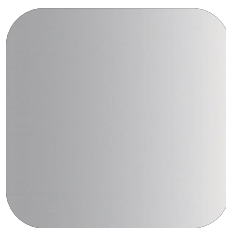
Ottonato
/ Brass



Ramato
/ Copper

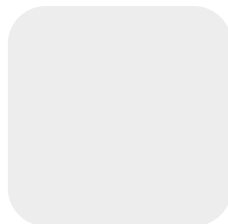


Carbonio
/ Carbon

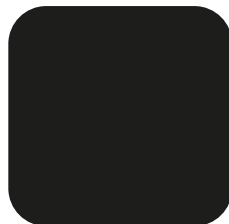


Cromato
/ Chromed

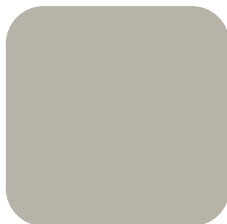
LACCATO / LACQUERED (Altri colori scala RAL disponibili su richiesta / Non standard RAL colours available on request)



Bianco
RAL 9016



Nero
RAL 9017



Grigio seta
RAL 7044

Finiture Speciali / Special finishes

Le seguenti finiture sono abbinabili soltanto ad alcuni prodotti.
/ The following finishes can be matched only with some products.

CORDA / ROPE (Disponibile solo per Load e Sey / Available only for Load and Sey)



Bianco / White
001

Nero / Black
006

Marrone / Brown
003

Canapa / Hemp
005

Giallo / Yellow
002

Rosso / Red
007

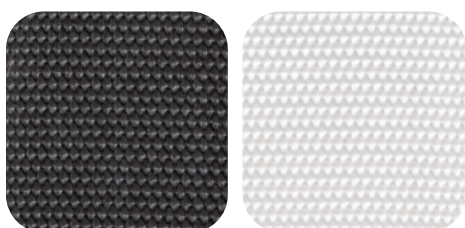
CORDINO IN CELLULOSA / CELLULOSE ROPE (Disponibile solo per Fratina e Vincent v. G. / Available only for Fratina and Vincent v. G.)



Antracite / Anthracite
0529

Avana / Hemp
0530

CINGHIE / STRAPS (Disponibile solo per Fratina / Available only for Fratina)



Nero / Black
1701

Bianco / White
1702

Finiture Speciali / Special finishes

Le seguenti finiture sono abbinabili soltanto ad alcuni prodotti.
/ The following finishes can be matched only with some products.

- Disponibile solo per / Available only for Marimba, Vincent v. G., Fratina
- Disponibile solo per / Available only for Marimba, Vincent v. G.
- Disponibile solo per / Available only for Marimba

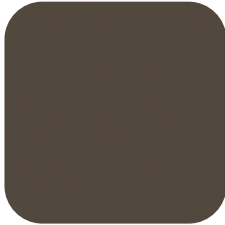
CUOINETTO / HIDE



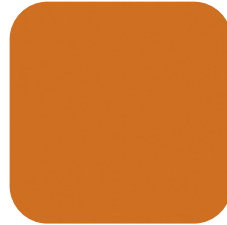
0537 •••



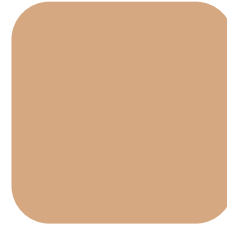
1545 •••



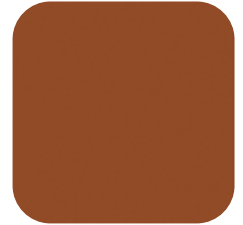
2335 •



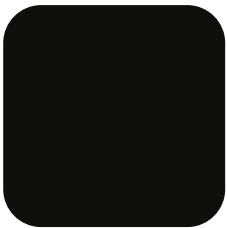
2334 •



2336 •



2340 ••

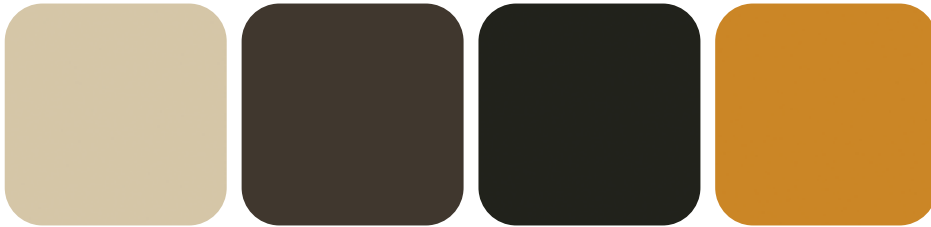


0536 •••

Finiture Speciali / Special finishes

Le seguenti finiture sono abbinabili soltanto a Marimba.
/ The following finishes can be matched only with Marimba.

PIENO FIORE / FULL-GRAIN LEATHER



2419

2421

2420

2463

FELTRO / FELT



2506

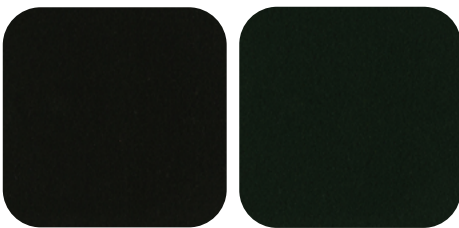
2510

2508

2471

2470

2509



2507

2511

Visita il nostro sito billiani.it
per scoprire le nostre collezioni
e realizzazioni.

/Visit us at billiani.it to discover
our collections and projects.

Billiani srl
Via della Roggia 28
33044 Manzano
(UD) Italia

Follow us on:
Instagram, Facebook,
LinkedIn, WeChat,
Pinterest

2023 © Billiani srl

T. (+39) 0432 740180
F. (+39) 0432 755953
E-mail: info@billiani.it
www.billiani.it

Certificazioni / Certifications



The mark of
responsible forestry
FSC® C133671



Promoting
Sustainable Forest
Management

PEFC™
PEFC18-32:77 www.pefc.org



Ask for our FSC® and PEFC™ certified products

Billiani srl is member of
the Italian Flair & Synergy for Contract